

your journey

your

WHITEHAVEN 6000

COUPE



AUSTRALIAN DESIGN & PERFORMANCE MEETS EUROPEAN STYLE & FINISH
WHITEHAVEN 6000 COUPE

The new 6000 Coupe personifies the design principles to which we aspire, reflecting our understanding of both the needs and desires of the premium boating community and the unique Australian coastal environment.

Its under the water where the 6000 Coupe introduces the start of her many unique features. A deep V bow provides smooth dry performance while the hydrodynamic hull design offers wide beam stability amidships and aft, offering exceptional long range cruising fuel economy and blue water integrity. You will be amazed at how stable

and dry the 6000 Coupe is in any conditions.

But its above the waterline where the Coupe will impress on any waterway throughout the world. Striking exterior lines are matched by a raised entertainers layout, featuring indoor and flowing outdoor living areas, gourmet galley and spacious accommodation. The fully appointed and well thought out helm will impress the most accomplished skipper, whilst master-crafted European inspired finishes teamed with exquisite fabrics and fittings make the Whitehaven 6000 Coupe more akin to a luxury home, than a boat.

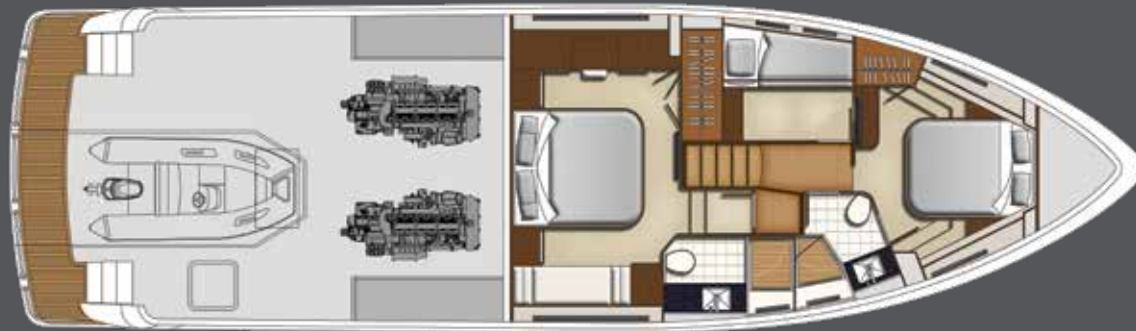












WHITEHAVEN 6000 COUPE

Length Overall	19.1m / 62' 6"
(including hydraulic swim platform)	
Beam	5.33m / 17' 6"
Maximum Draft	1.47m / 4' 8"
Sleeping Capacity	6-8 persons
Fuel Capacity	Approx 5,500 litres
Water Capacity	Approx 800 litres
Holding Tank Capacity	Approx 300 litres
Generator	17.5kW / 50HZ



COUPE6000



SUNBRIDGE6000



FLYBRIDGE6000



CONVERTIBLE6600

your



WHITEHAVEN

MOTOR YACHTS

www.wmy.com.au